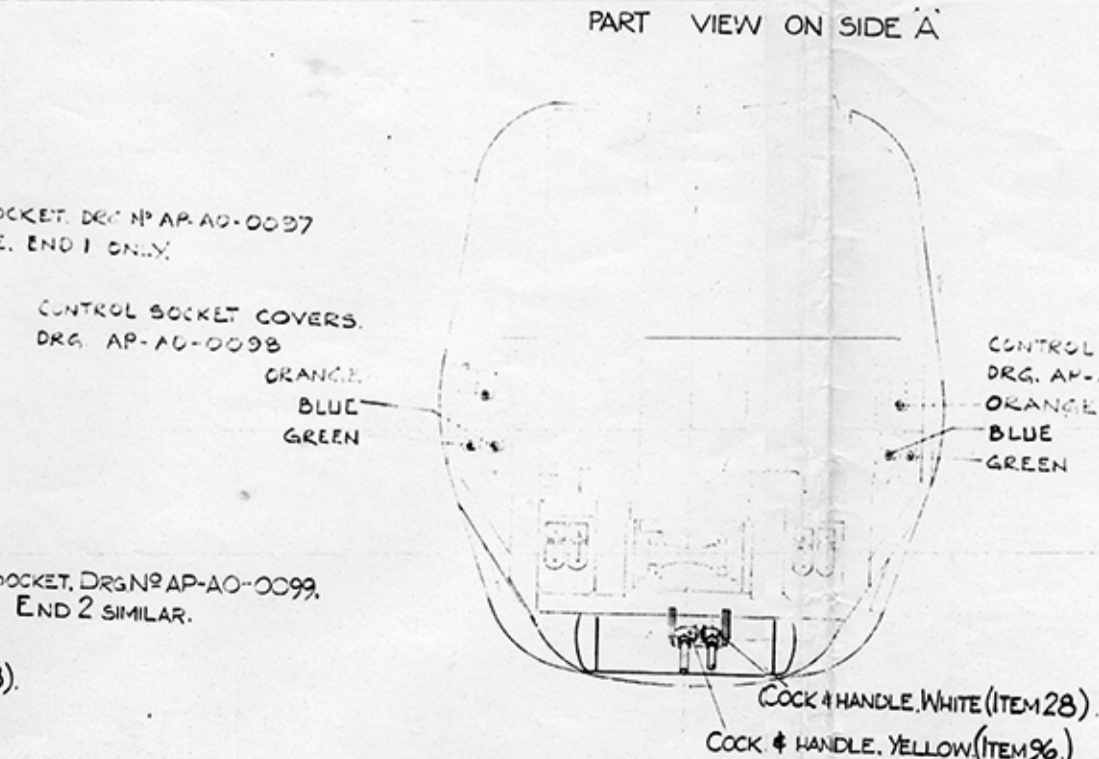
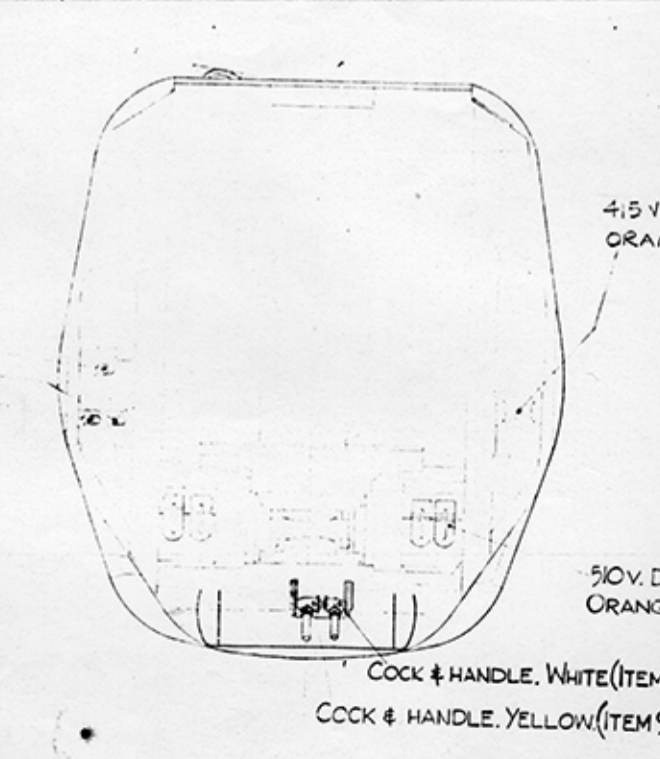
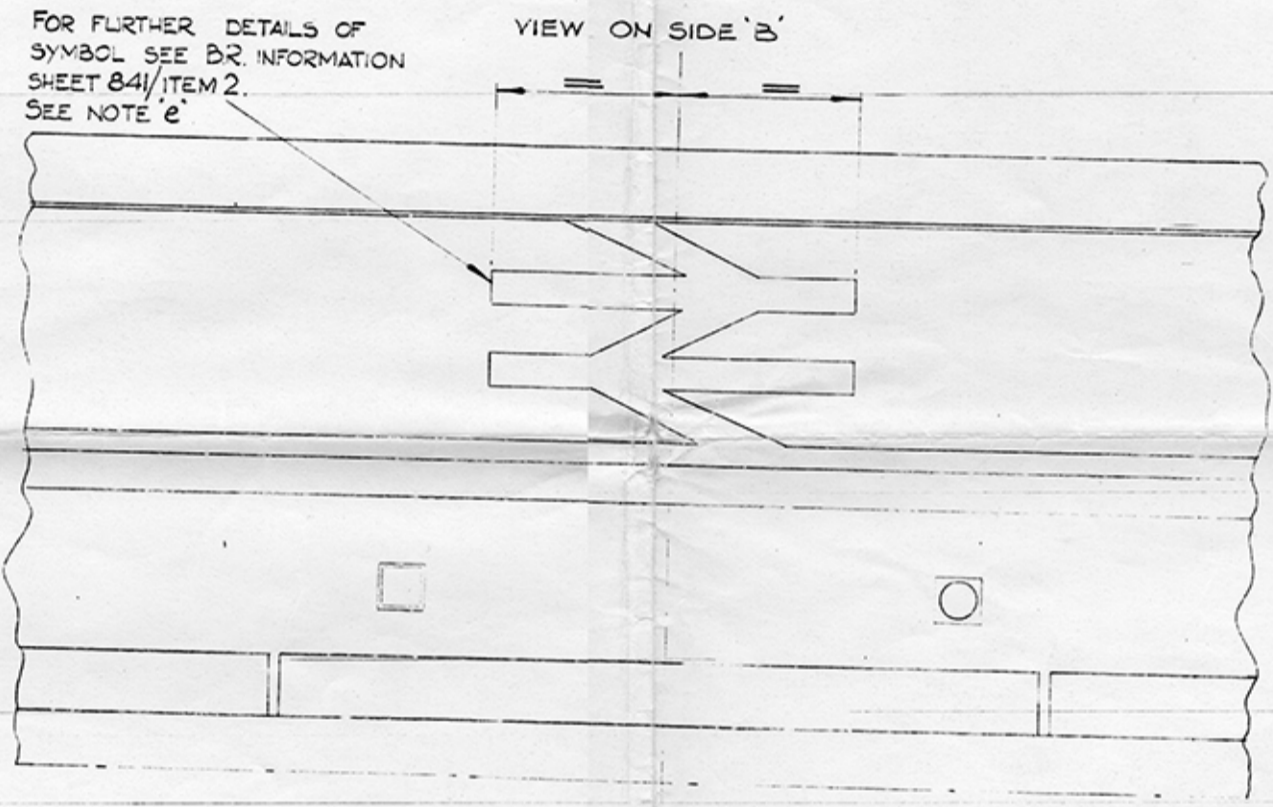
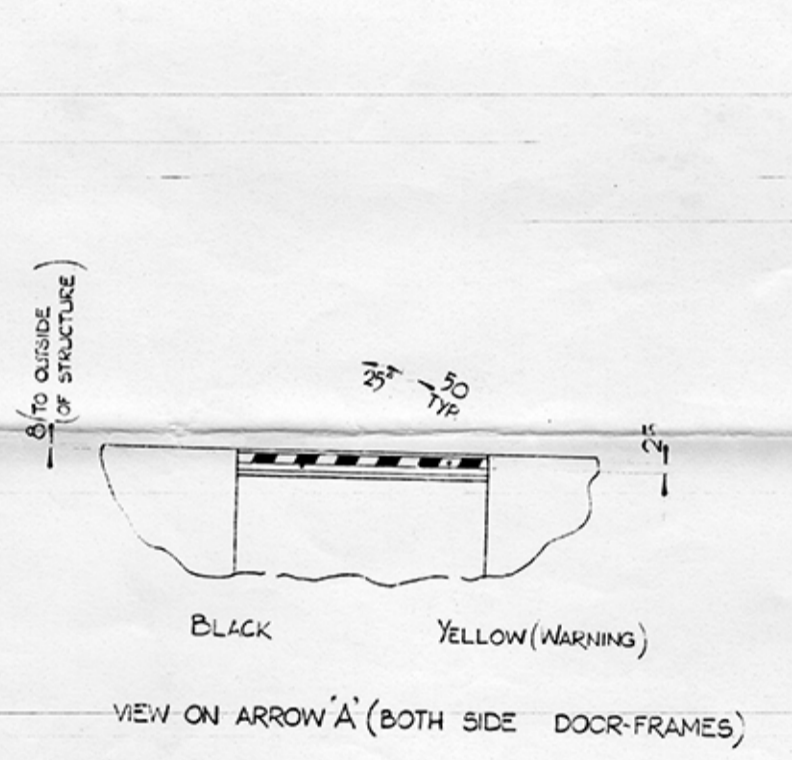


ISSUE	AMENDMENTS
B	END 1 & END 2 VIEWS ADDED, COLOUR SPEC. AMENDED, NOTES & CRASH PILLAR COLOUR ADDED.
C	50V SOCKET NOTE ADDED, 50V SOCKET NOTE & CONTROL SOCKET NOTE AMENDED.
D	NOTE 'd' ADDED & DRG. AMENDED ACCORDINGLY.
E	MOD. NO 76003 J, SHT. 2, CONTROL SOCKET COVERS WERE ALL COLOURED ORANGE (D) BLUE & GREEN ADDED TO COLOUR SPECIFICATIONS. CONTIN. ED. SEE LEFT.



AMENDMENTS
MOD. NO. 19001 P
END 1 & END 2 VIEWS ADDED TO NOTE AT B9.
COLOUR SPEC. ADDED TO CRASH PILLAR NOTE ADDED AT C8F6.
MOD. NO. 19003 P
INTERCITY APT LETTERING & NOTE ADDED.
MOD. NO. 11183
VIEW ON ARROW 'A' ADDED.
NAMEPLATE & NOTE 'f' ADDED.
MOD. NO. 11156
CRASH PILLAR COLOUR SPEC. ADDED TO NOTE 'a' & 'b'.
NOTE 'a' & 'b' AMENDED ACCORDINGLY.
MOD. NO. 15015
VIEW ON ARROW 'A' DETAIL REPOSED.
VIEW ON SIDE 'A' ADDED.
INTERCITY LETTERING WAS ON SIDE 'B'.
CRASH PILLAR COLOUR SPEC. ON SIDE 'B'.
MOD. NO. 19017
CRASH LINE WAS WHITE (A8).
INTERCITY APT WAS SPACED 50 FROM WHITE & ORANGE BANDS (D77).
MOD. NO. 9003 & 15018
INTERCITY APT LETTERING AS ON SIDE 'A' & 'B'.
NAMEPLATE ON SIDE 'B'.
NOTE 'e' AMENDED ACCORDINGLY.
MOD. NO. 5709 & 37032
CRASH PILLAR COLOUR SPEC. ADDED: CRASH PILLAR (BLACK).
CRASH PILLAR COLOUR SPEC. ADDED.



VIEW ON END 1.

VIEW ON END 2.

COLOUR SPECIFICATIONS

FRANCH BLUE	- BR SPEC 81 ITEM 523
GRASS GREEN	- BR SPEC 81 ITEM 524
LIGHT GREY	- BR SPEC 81 ITEM 200
DARK GREY	- BR SPEC 81 ITEM 201
RAIL RED	- BR SPEC 81 ITEM 204
WHITE	- BR SPEC 81 ITEM 203
BLACK	- BR SPEC 81 ITEM 205
ORANGE	- BR SPEC 81 ITEM 520
YELLOW (WARNING)	- BR SPEC 81 ITEM 202
YELLOW	- BR SPEC 81 ITEM 526

- NOTES:-
- FOR EXTERNAL LETTERING DIAGRAM SEE DRG. NO AP-A0-0046.
 - FOR BOGIE PAINTING DIAGRAM SEE DRG. NO. AA-A1-1126.
 - UNDERCOATS TO BE IN APPROPRIATE COLOUR MATCH TO BR71.
 - LETTER 'C' IN VEHICLE NUMBER PREFIX TO BE LOWER CASE.
 - INTERCITY APT LETTERING TO BE ON SIDE 'B' ONLY SYMBOL TO BE ON SIDE 'A' ONLY.
 - NAMEPLATE TO BE ON SIDE 'A' END 2, & SIDE 'B' END 1 ONLY. FOR FIXING POSITION OF NAMEPLATE SEE DRG. NO AL-A1-2111.

ITEM NO.	PART NO.	DESCRIPTION	NO.	MATERIAL/REMARKS								
USED ON - AP-A0-0001												
CHIEF MECHANICAL & ELECTRICAL ENGINEER BRITISH RAILWAYS BOARD, DERBY.												
ISSUE	A	B	C	D	E	F	G	H	I	J	K	L
DRAWN	B.S.	TR	TR	ED	RD	FEW	JON	REN	W	2	A	EW
CHECKED	AL	OP	OP	OP	OP	OP	OP	OP	OP	OP	OP	OP
STRESSED	AL	OP	OP	OP	OP	OP	OP	OP	OP	OP	OP	OP
APPROVED	AL	OP	OP	OP	OP	OP	OP	OP	OP	OP	OP	OP
DATE	11.7.77	15.7.77	15.7.77	15.7.77	15.7.77	15.7.77	15.7.77	15.7.77	15.7.77	15.7.77	15.7.77	15.7.77

SCALE:- 1:20 & 1:10

ALL DIMENSIONS IN MILLIMETRES UNLESS OTHERWISE STATED

GENERAL DRAWING OFFICE PRACTICE TO B.S. 308

DRAWING NO. AP-A0-0048

SHEET 1 OF 1